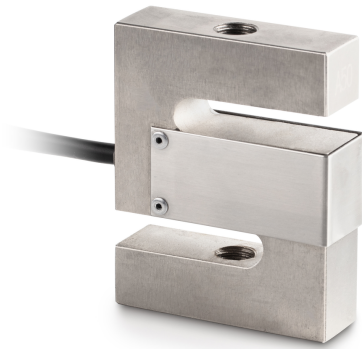


# KERN CS 5000-3Q1

6-wire "S" measuring cell made of nickel-plated steel for force and mass measurement



Load cell - Output resistance - variance	3 $\Omega$
Measuring range force [Max] (N)	50 kN
Directions of force	tension compression

<b>Approval</b>	
CE mark	✓

<b>Construction</b>	
Design	"S" shaped cell
Dimension (W×D×H)	120×100×45 mm
Material	steel, nickel-plated
Cable length	5 m
Mounting - force application	Threaded hole M24 × 2
Mounting - force dissipation	Threaded hole M24 × 2

<b>Functions</b>	
IP protection - complete device	IP67

<b>Environmental conditions</b>	
Ambient temperature [Min]	-10 °C
Ambient temperature [Max]	40 °C
Storage temperature [Min]	-30 °C
Storage temperature [Max]	70 °C

<b>Packing &amp; Shipping</b>	
Readability force [d] (N)	1 d
Dimensions packaging (W×D×H)	220×135×100 mm
Net weight	3,3 kg
Shipping method	Parcel service
Net weight approx.	3,4 kg
Gross weight approx.	3,6 kg
Shipping weight	3,51 kg

<b>Services (optional)</b>	
Article number for factory calibration (tensile force)	961-165V
Article number for factory calibration (compressive force)	961-265V
Article number for factory calibration (tensile force/ compressive force)	961-365V

## Category

Brand	Sauter
Product category	Measuring cell
Product group	Load/force measuring cell
Product family	CS Q1

## Measuring System

Weighing capacity [Max]	5000 kg
Load cell connection	6-wire
Load cell OIML class	C3
Load cell - Resolution (verifiable)	3000 e
Load cell - characteristic value - nominal	2 mV/V
Load cell - characteristic value - variance	0,002 mV/V
Load cell - Y-value	10000
Load cell - Combined error	0,017%
Load cell - Dead load [Min] (%)	0%
Measuring applications	force mass
Load cell - Input resistance - nominal	400 $\Omega$
Load cell - Output resistance - nominal	350 $\Omega$
Load cell - Isolation resistance - [Min]	5000 M $\Omega$
Load cell - Recommended excitation voltage [Min]	10 V
Load cell - Recommended excitation voltage [Max]	15 V
Load cell - Input resistance - variance	20 $\Omega$

# KERN CS 5000-3Q1

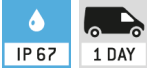


6-wire "S" measuring cell made of nickel-plated steel for force and mass measurement

## Pictograms

### STANDARD

---



### OPTION

---

